

**UNIVERSITY OF CALIFORNIA
SAN DIEGO DIVISION OF THE ACADEMIC SENATE
REPRESENTATIVE ASSEMBLY**

[see pages 2 and 3 for Representative Assembly membership list]

NOTICE OF MEETING
Tuesday, April 4, 2017, 3:30 p.m.
Garren Auditorium, Biomedical Sciences Building, 1st Floor

ORDER OF BUSINESS

	<u>Page</u>
(1) Minutes of Meeting of January 31, 2017	4
(2-7) Announcements	
(a) Chair Kaustuv Roy	Oral
(b) Chancellor Pradeep Khosla	Oral
(c) Immigration Update	Oral
• Juan Gonzalez, VC-Student Affairs	
• Jeffrey Orgera, AVC-Student Retention & Success	
(d) Scholars at Risk Network	Oral
• Stephanie Jed, Professor, Department of Literature	
(8) Special Orders	
(a) Consent Calendar	
Senate Election – Nominations for Committee on Committees	Handout
(9) Reports of Special Committees [none]	
(10) Reports of Standing Committees	
(a) Committee on Senate Awards, David Serlin, Committee Member	Oral
• 2016-2017 Distinguished Teaching Awards	
(11) Reports of Faculties [none]	
(12) Petitions of Students [none]	
(13) Unfinished Business [none]	
(14) New Business	

REPRESENTATIVE ASSEMBLY 2016-2017 MEMBERSHIP

Ex Officio Members:

Chair of Division	Kaustuv Roy
Chancellor	Pradeep Khosla
Vice Chair of Division	Farrell Ackerman
2015-16 Chair of Division	Robert Continetti
Chair, Committee on Academic Personnel	Ulrike Strasser
Chair, Committee on Admissions	Gilberto Mosqueda
Chair, Campus Community Environment	David Stegman
Chair, Committee on Committees	Kimberly Prather
Chair, Committee on Diversity and Equity	Olivia Graeve
Chair, Educational Policy Committee	Matthew Herbst
Chair, Committee on Faculty Welfare	Gedeon Deak
Chair, Graduate Council	Richard Arneson
Chair, Committee on Planning and Budget	Andrew Kahng
Chair, Committee on Privilege and Tenure	Katja Lindenberg
Chair, Committee on Research	Emmanuel Theodorakis
Chair, Undergraduate Council	Geoffrey Cook
Member, Academic Council	Isaac Martin
Member, Academic Council	Kwai Ng
Member, Academic Assembly	Nadine George-Graves
Member, Academic Assembly	Gail Heyman
Member, Academic Assembly	Gentry Patrick
Interim Executive Vice Chancellor, Academic Affairs	Peter Cowhey
Vice Chancellor, Health Sciences	David A. Brenner
Vice Chancellor, Marine Sciences	Margaret Leinen
Vice Chancellor, Research	Sandra Brown

Representatives:

Elected Members

Alternates

Divisional Representative (at-large)	Lorraine Pillus	('18)	_____	
	Anna Joy Springer	('18)	_____	
Revelle College	Sarah Gille	('17)	_____	
	Vlado Lubarda	('17)	Charles Perrin	('17)
John Muir College	Kim Albizati	('17)	Eric Bakovic	('17)
	Adam Burgasser	('18)	James Nieh	('18)
Thurgood Marshall College	Stanley Lo	('17)	Sheng Xu	('18)
	Robert Cancel	('18)		
	Dan Hallin	('18)	Christine Hunefeldt	('18)
Earl Warren College	Yuri Bazilevs	('18)	Ella Tour	('18)
	John Hildebrand	('18)	Doug Nitz	('18)
Roosevelt College	Gershon Shafir	('18)	_____	
	Babak Rahimi	('18)	_____	
Sixth College	Lei Ni	('18)	Eduardo Macagno	('18)
	Robert Pomeroy	('18)	Haim Weizman	('18)
Emeritus Faculty	Henry Powell	('17)	_____	
Anesthesiology	_____		_____	
Anthropology	_____		_____	
Bioengineering	Peter Wang	('17)	Gert Cauwenberghs	('17)
Biological Sciences	David Holway	('17)	Jonathan Shurin	('17)
	Takaki Komiyama	('17)	Dong-Er Zhang	('17)
Cellular & Molecular Med.	George Sen	('17)	Gene Yeo	('17)
Chemistry & Biochemistry	Jerry Yang	('17)	Nathan Gianneschi	('17)
	Navtej Toor	('18)	Mike Tauber	('18)
Cognitive Science	_____		Angela Yu	('18)
Communication	Brian Goldfarb	('18)	Robert Horwitz	('18)
Computer Science & Engineering	Leo Porter	('17)	_____	
	Chung K Cheng	('17)	_____	
Dermatology	Bryan Sun	('18)	Lawrence Eichenfield	('18)
Economics	James Andreoni	('17)	Karthik Muralidharan	('17)
	David Lagakos	('18)	Prashant Bharadwaj	('18)
Education Studies	Shana Cohen	('18)	Carolyn Hofstetter	('18)
Electrical & Computer Engineering	David Sworder	('18)	Zhaowei Liu	('18)
	Yuan Taur	('18)	Ken Kreutz-Delgado	('18)
Emergency Medicine	Richard Clark	('17)	Chris Kahn	('17)
Ethnic Studies	Kalindi Vora	('18)	Jillian Hernandez	('18)

Family Medicine and Public Health	Elena Martinez	('18)	Cheryl Anderson	('18)
History	Rebecca Plant	('18)	Mark Hanna	('18)
	Robert Westman	('18)		
Global Policy and Strategy	Roger Bohn	('18)		
Linguistics	Grant Goodall	('17)	Rachel Mayberry	('17)
Literature	Amelia Glaser	('17)	Seth Lerer	('17)
	Stephanie Jed	('18)	Daniel Vitkus	('18)
Mathematics	James McKernan	('17)	David Meyer	('17)
	Jason Schweinsberg	('18)	Dimitris Politis	('18)
Mechanical & Aerospace Engineering	Xanthippi Markenscoff	('17)	James Friend	('17)
	William McEaney	('17)	Kal Seshadri	('17)
Medicine	David Smith	('17)	Doug Conrad	('17)
Music	Stephanie Richards	('18)	Sarah Hankins	('18)
NanoEngineering	Jian Luo	('18)	Donald Sirbulu	('18)
Neurosciences	Richard Haas	('17)	Ronald Ellis	('17)
Ophthalmology	Bobby Korn	('17)	Linda Zangwill	('17)
Orthopaedics	Simon Schenk	('17)	Sameer Shah	('17)
Pathology	David Herold	('17)	David Bailey	('17)
	Jonathan Lin	('18)	David Pride	('18)
Pediatrics				
Pharmacology	Richard Daneman	('17)	Hyam Leffert	('17)
Philosophy	Matthew Fulkerson	('18)	Clinton Tolley	('18)
Physics	Massimo Vergassola	('17)	Oleg Shpyrko	('17)
	Massimo Di Ventra	('18)	Richard Averitt	('17)
Political Science	David Mares	('18)		
	Simeon Nichter	('18)		
Psychiatry	Niloo Afari	('18)	Gregory Aarons	('18)
	Jared Young	('18)	Barton Palmer	('18)
Psychology	Adam Aron	('17)	Stephan Anagnostaras	('17)
Radiation Medicine & Applied Sciences				
Radiology	Amilcare Gentili	('18)	Roland Lee	('18)
	David Dubowitz	('18)	Jiang Du	('18)
Rady School of Management	David Schkade	('17)	Yuval Rottenstreich	('17)
Reproductive Medicine	David Natale	('18)	Dwayne Stupack	('18)
SIO	Sarah Giddings	('17)	Paola Cessi	('17)
	Guy Masters	('17)	Anne Pommier	('17)
	George Sugihara	('17)	Laurence Armi	('18)
	Andrew Allen	('18)	Amato Evan	('18)
	Andreas Andersson	('18)	Stuart Sandin	('18)
	Jennifer Taylor	('18)		
Sociology				
SSPPS	Bradley Moore	('18)	Dionicio Siegel	('18)
Structural Engineering	John McCartney	('18)	Chia-Ming Uang	('18)
Surgery	Justin Brown	('18)		
	Christina Jamieson	('18)		
Theatre and Dance	Robert Castro	('18)	Victoria Petrovich	('18)
	Charles Means	('17)	Kim Rubinstein	('17)
Visual Arts	John Welchman	('18)	Grant Kester	('18)
	Ruben Ortiz	('18)	Kuiyi Shen	('18)
Advisors:				
Research - General Campus	Amarnath Gupta	('17)	Harinath Garudadri	('17)
Research - Health Sciences	Ellen Breen	('17)	Charles King	('17)
Research - Marine Sciences				
Undergraduate Student	Rushil Patel	('17)		
Undergraduate Student	Dylan Trinh	('17)		
Graduate Student	Tatiana Zavodny	('17)		
Graduate Student				
Parliamentarian	Gerry Mackie			

**UNIVERSITY OF CALIFORNIA
SAN DIEGO DIVISION OF THE ACADEMIC SENATE
REPRESENTATIVE ASSEMBLY
January 31, 2017
MINUTES**

Chair Roy called the meeting to order. A quorum was present (see attached attendance sheet), along with other Academic Senate members and guests. Chair Roy welcomed everyone to the meeting and introduced Academic Senate Vice Chair Farrell Ackerman, and Professor Gerry Mackie, Parliamentarian. Chair Roy introduced the Academic Senate Office staff present: Ray Rodriguez, Director of the Academic Senate Office; Tara Mallis, Assembly Recorder; Trevor Buchanan, Programmer Analyst and technical support; Danny Kopp, Senate Analyst; and Alex Tea, Executive Assistant. Chair Roy reviewed the Academic Senate Bylaws governing membership, privileges of the floor and voting.

Chair Roy announced that in response to the recent Executive Order concerning immigration, Senate Council drafted a resolution to present to the Representative Assembly for a vote. Since this was a late breaking issue it was not included on the agenda and will be treated as new business. Chair Roy encouraged members to remain until the end of the meeting to discuss this item.

MINUTES OF MEETING OF NOVEMBER 29, 2016

There were no objections and the minutes of the meeting of November 29, 2016 were approved.

ANNOUNCEMENTS BY THE CHAIR OF THE DIVISION

Senate Events

The Senate will be hosting a Senate service event on February 10th at the Faculty Club. This event serves as an informal networking opportunity and is designed to encourage Senate faculty to participate in Senate service, especially those faculty who have not served yet. All faculty are invited and encouraged to attend. Chair Roy asked the members to share this information within their departments and reminded attendees that shared governance only works when all Senate faculty participate. Members interested in attending were directed to RSVP to the Academic Senate Office.

Faculty Research Lectures

The Faculty Research Lectures will be held on February 14th at the Faculty Club. This event provides the opportunity to celebrate the achievements of faculty colleagues. The pre-lecture reception starts at 2:00pm and the lectures will begin at 2:30pm. This year's Senate Research Awardees are Professor David Brink (Philosophy) and Professor Joanna McKittrick (Mechanical and Aerospace Engineering). Chair Roy encouraged all members to attend.

Systemwide Academic Council Update

The Regents are still considering a systemwide cap on non-resident enrollment. There was an initial proposal to implement a 20% cap on non-resident enrollment on each campus. The systemwide Academic Council along with a number of systemwide committees, the Chancellors, and the Executive Vice Chancellors took a position against the cap due to the significant impacts the cap would have on the University. This opposition was conveyed to the Regents and they appeared open to considering less restrictive caps or alternative models. In his presentation to the Regents, systemwide Senate Chair Jim Chalfant pointed out that there is no evidence that non-resident enrollment is hurting resident enrollment, and in fact, non-resident enrollment subsidizes residents. This issue is expected to be taken up at the March meeting.

At the close of announcements, Chair Roy invited Chancellor Khosla to address the Assembly.

PRESENTATION BY CHANCELLOR PRADEEP KHOSLA

Chancellor Khosla thanked Chair Roy for the opportunity to address the Assembly and shared a brief update on the campus' budget outlook.

Five-Year Outlook

Chancellor Khosla shared that UCSD has a total operating budget of roughly \$4.5 billion. This year, for the fourth year in a row, the campus passed \$1 billion in contracts and grants. Chancellor Khosla shared an optimistic five-year outlook that presumes a continuing 4% State base increase and 2.5% tuition increase. This year, because the yield on admissions was underestimated, the campus has a \$16.5 million surplus. In 2017/18 under the optimistic model, there will be an estimated \$2.8 million surplus. In 2018/19 under this projection, the campus will face a \$9 million deficit assuming state funding continues and the proposed tuition increase goes forward. The alternate five-year outlook, based on the current budget deal that includes a 4% state base increase and 2.5% tuition increase in 2017/18 only, is projected to result in an earlier deficit.

Revenue Opportunities

Chancellor Khosla noted that there are many options to pursue revenue but overall, the campus will need to identify alternate sources of revenue going forward and become more efficient in adding more faculty and reinvesting revenue into departments. The Chancellor highlighted several possible opportunities including fundraising, real estate/property developments, and the auxiliary taxes. The Chancellor pointed out that the campus has not taken full advantage of its real estate portfolio and noted several possible ideas for using the property more effectively to generate more funds.

Strategic Investments Needed

Chancellor Khosla highlighted the campus' commitment to addressing the student/faculty ratio. Work is being done to add more faculty and continue the capital projects currently in process, which include more student housing and new buildings for Arts and Humanities. The campus is also looking to add two more undergraduate colleges with discussions in progress regarding the planning process for the first of the two new colleges. The Chancellor noted that in developing the new colleges, the Administration has no agenda other than to provide a great student experience.

Fundraising

Chancellor Khosla gave an overview of the status of the current campaign. The campus has raised 60% of its \$2 billion goal. Six months into this academic year, the campus raised \$150 million. Chancellor Khosla thanked the faculty for their role in the fundraising campaign, and noted that donors are giving because of the research being done at this campus and their desire to support that research.

At the close of the presentation, Chair Roy opened the floor to questions.

An attendee asked what was happening at the UC level in response to the Executive Order regarding immigration. The Chancellor affirmed this campus' commitment to protecting the rights of all the members of the campus community; the University is working with a number of organizations to affirm and express this position of support. The Chancellor encouraged faculty to reach out to him and the Interim Executive Vice Chancellor if they or any other faculty on campus need help more immediately.

At the close of questions Chair Roy introduced Professor Robert Continetti, immediate past Chair of the San Diego Divisional Senate, and Professor Kim Prather, Chair of the Committee on Committees, to deliver a presentation on the Academic Senate and Senate service.

SENATE OVERVIEW & SENATE SERVICE, PRESENTATION BY ROBERT CONTINETTI, FORMER DIVISIONAL SENATE CHAIR AND KIMBERLY PRATHER, CHAIR, COMMITTEE ON COMMITTEES

Professor Robert Continetti, immediate past Chair of the Academic Senate, opened the presentation with a brief overview of the Academic Senate and its functions. Professor Continetti explained that the Academic Senate is “the primary vehicle through which faculty participates in shared governance.” Per Regents Standing Order 105 (Regents Bylaw 40.2), the Academic Senate has the authority to set admissions requirements, set graduation requirements, approve courses and curriculum, and approve publication of manuscripts by UC Press. The Academic Senate may advise on the budget and other matters relating to “the conduct and welfare of the University.” Professor Continetti explained the organization of the Senate and discussed the distinctions between the systemwide Academic Senate and the Divisional Academic Senates on each campus. Professor Continetti also explained how work flows through the Senate and outlined the Senate leadership structure. Professor Continetti explained Senate membership and shared that there are around 2000 San Diego Divisional Senate members, including around 500 emeriti faculty.

Professor Kim Prather, Chair of the Committee on Committees (ConC), discussed Senate Committee service and shared how Senate members could update their service preferences online. Professor Prather explained that ConC uses the Senate service preference tool when they are appointing committee members and the tool helps match faculty with committees in which they are interested. Attendees were encouraged to use the tool to update or confirm their preferences. At the close of the presentation Chair Roy opened the floor to questions. There were no questions and Chair Roy thanked Professor Continetti and Professor Prather.

At the close of the presentation, Chair Roy invited Garry Mac Pherson – Associate Vice Chancellor, Environmental Health & Safety, Monique Crandall - Director, Student Affairs Case Management Services, and Melissa Luth – Police Sergeant, Campus Police to address the Assembly.

[Note: The slides from this presentation are attached to these minutes as Enclosure A.]

PRESENTATION ON STUDENTS IN DISTRESS BY MONIQUE CRANDALL, DIRECTOR, STUDENT AFFAIRS CASE MANAGEMENT SERVICES, GARRY MAC PHERSON, ASSOCIATE VICE CHANCELLOR – ENVIRONMENTAL HEALTH & SAFETY, AND MELISSA LUTH, POLICE SERGEANT, CAMPUS POLICE

AVC Mac Pherson noted the timeliness of the topic of campus safety and gave a brief overview of the order of the presentation. He explained that the campus works to address issues proactively to intervene and manage situations before they have a chance to escalate. AVC Mac Pherson introduced Dismas Abelman, Emergency Manager, to provide more information on the campus’ emergency management system. Mr. Abelman explained that the campus’ Emergency Management Division works proactively with other departments and regional partners to maintain the campus’ ability to adapt and respond to emergency situations. A Campus Emergency Response Team has been developed. Currently this team has 365 members. If an incident occurs, these volunteers are trained to help provide order until official responders arrive. This team participates in a number of campuswide and regional exercises to maintain readiness. Mr. Abelman outlined the existing safety programs in place including the Triton Alert system and the Behavioral Threat Assessment & Management Team.

AVC Mac Pherson introduced Dr. Monique Crandall, Director of Student Affairs Case Management Services to discuss Student Case Management Services (SCMS). Dr. Crandall explained that SCMS works closely with Student Health Services and Counseling and Psychological Services (CAPS) to connect students with resources. More information has been disseminated on campus regarding how to recognize students of concern. Dr. Crandall shared a snapshot of the data on students of concern from the fall quarter in 2015 compared to the fall quarter of 2016. Dr. Crandall also shared information regarding student psychological hospitalizations. Hospitalizations are not common but do occur. After hospitalization, SCMS helps students readjust to campus. SCMS works to limit

the impact to students' academic progress by recognizing these students sooner and connecting them with needed resources. The Triton Concern Line is a new, 24/7 hotline that faculty and staff can call if they are concerned about a student. Another campus resource is the Behavioral Threat Assessment and Management Team. This team consults on and manages threats of violence to others and the broader campus community. The team addresses threats posed by students, staff, faculty and non-affiliates. Dr. Crandall and Mr. Abelman co-chair this team and work closely with the UC San Diego Police Department to keep track of changes in active cases.

AVC Mac Pherson introduced Roberto Meza, Manager of the Campus Physical Security Program embedded within the campus police department. Mr. Meza has worked to develop the campus emergency communication system and has helped bring other physical safety resources on campus. Mr. Meza shared information about community safety programs and highlighted new safety features on campus. A gunshot detection system is currently being installed. This system connects into the security camera system and will allow for vetted information to be communicated to dispatchers in less than one minute. Additionally, the emergency call boxes are being replaced with updated models and progress is being made to identify lockdown hardware for doors on campus.

At the close of the presentation the floor was opened to questions.

An attendee asked about issues with lighting on campus and noted that the eastern side is very dark. The attendee noted that the library would like to expand its 24/5 Study Commons resources but was hesitant to do so given the lighting issues. AVC Mac Pherson noted that there is an annual lighting survey where groups of individuals walk specific areas of campus to assess lighting needs. The attendee was encouraged to send an email regarding the lighting issues.

An attendee asked what CAPS is doing to make more appointments available to students. Dr. Crandall explained that CAPS and the International Center are working on ways to provide more immediate resources. CAPS is currently working on implementing a system to allow for a telephone assessment prior to scheduling an in-person appointment to help students identify other resources that might be helpful before their appointment. AVC Mac Pherson acknowledged that the use of mental health services has risen sharply and work is being done to secure more resources. An attendee asked what can be done when students exhaust their CAP resources. Dr. Crandall noted that CAPS is meant to be a short-term service but CAPS has other resources that can help students get access to longer term assistance. If students exhaust their CAPS resources, they are encouraged to call for information regarding alternate resources.

An attendee asked if students could call the Triton Concern Line. Dr. Crandall explained that the Triton Concern Line is currently intended of faculty and staff to call to report possible students of concern. If a student calls they will not be turned away, but there are other student specific resources. AVC Mac Pherson pointed out that if students see something of concern, they can also call the UCSD Police Department. An attendee commented on the volume of the calls and asked whether there was a cultural component to the issue of students of concern. Dr. Crandall shared that the team takes a holistic view in assessing a person of concern with a majority of time spent providing education and resources regarding sources of conflict to provide different perspectives that might be missing in attempting to understand the person of concern. AVC Mac Pherson pointed out that cultural differences are not limited to students and it is not uncommon to receive calls that arise from cultural misunderstanding. In these cases, work is done to build understanding to alleviate the issue.

At the close of the presentation Chair Roy thanked the presenters and encouraged attendees to share this information with their home departments.

[Note: The slides from this presentation are attached to these minutes as Enclosure B.]

SPECIAL ORDERS

- Consent Calendar [*None*]

REPORTS OF SPECIAL COMMITTEES [*None*]

REPORTS OF STANDING COMMITTEES

Graduate Council

- Proposed Program of Study Leading to a Master of Professional Accountancy, Rady School of Management
Chair Roy introduced Professor Richard Arneson, Chair of Graduate Council (GC), and Professor Rossen Valkanov from the Rady School of Management, to present the proposal to establish the Master of Professional Accountancy (MPAc) at the Rady School of Management.

Professor Valkanov gave a brief overview of the proposal. The MPAC will be a one-year, self-supporting program with an expected enrollment of 75 students per year. The program will require 50 quarter units and will use existing resources at Rady. Professor Valkanov highlighted the need for CPAs within the accounting profession, and the interest in this degree from students within the existing undergraduate accounting minor. Per California law, in order to sit for the California CPA exam, an individual must have a bachelor's degree and complete at least one additional year of post-secondary education in business and accounting subjects; The MPAC will satisfy the additional education requirement.

At the close of Professor Valkanov's presentation, Professor Arneson made a motion on behalf of GC to approve the establishment of the MPAC program. Since the motion was made on behalf of a Senate committee, no second was required. Chair Roy opened the floor to questions and comments. There were no questions or comments. Chair Roy called for a voice vote to approve the motion. The motion to approve the establishment of the MPAC program was passed by a majority.

[Note: The slides from this presentation are attached to these minutes as Enclosure C.]

- Proposed Amendment to San Diego Senate Regulation 703, Master of Finance, Rady School of Management
Chair Roy invited Professor Arneson and Professor Valkanov to present the proposed amendment to San Diego Senate Regulation 703, Master of Finance, Rady School of Management. Professor Valkanov explained that the change would allow up to 12 units of "S" grades to count in satisfaction of requirements for the Master of Finance (MF) degree. This change was proposed in response to the professional seminars MF students are encouraged to attend. Due to the nature and content of these seminars, the courses are offered for an S/U grade only. All other courses in the MF program require letter grades.

Professor Arneson made a motion on behalf of GC to approve the proposed amendment to San Diego Senate Regulation 703. Since the motion was made on behalf of a Senate committee, no second was required. Chair Roy opened the floor to questions and comments. An attendee asked how many units are required to complete the program. Professor Valkanov shared that 50 units are required to complete the degree. Due to the nature of the program and the students in the program, the seminars are generally the only "S" courses the students take. An attendee asked whether this amendment was specific to the MF degree. Professor Valkanov confirmed this amendment was specific to the MF program.

At the close of questions, Chair Roy called for a voice vote. The motion to approve the proposed

amendment to San Diego Senate Regulation 703 was approved by a majority.

[Note: The slides from this presentation are attached to these minutes as Enclosure D.]

- Proposed PhD in NanoEngineering and Chemical Engineering with a Specialization in Multi-Scale Biology

Chair Roy invited Professor Arneson and Professor Andrew McCulloch from the Department of Bioengineering to present the proposal to expand the specialization in Multi-Scale Biology to include students in the PhD programs in NanoEngineering and Chemical Engineering.

Professor McCulloch explained that the proposal would allow NanoEngineering and Chemical Engineering to join the existing specialization in Multi-Scale Biology that currently includes eight other degree programs. The curriculum in the specialization was developed with the support of the Howard Hughes Medical Center and aligns with the existing NanoEngineering and Chemical Engineering programs. There are currently five NanoEngineering faculty already involved with the specialization program and there is interest in applying from a number of PhD students.

Professor Arneson made a motion on behalf of GC to approve the proposed PhDs in NanoEngineering and Chemical Engineering with a specialization in Multi-Scale Biology. Since the motion was made on behalf of a Senate committee, no second was required. Chair Roy opened the floor to questions and comments.

An attendee asked about funding. Professor McCulloch explained that the specialization is funded by a number of sources, including external sources. Expanding the specialization to include students from two more PhD programs doesn't require additional support. Another attendee asked about accountability and how the success of the program is measured. Professor McCulloch shared that the program has been reviewed twice by the National Institutes of Health. Additionally, every time a program joins a specialization, the proposal is reviewed by Graduate Council and the Graduate Division.

At the close of questions, Chair Roy called for a voice vote. The proposed PhDs in NanoEngineering and Chemical Engineering with a Specialization in Multi-Scale Biology were approved unanimously.

- Proposed Name Change of the MS in Structural Engineering with Specialization in Health Monitoring, Prognosis, and Validated Simulations to MS in Structural Engineering with Specialization in Health Monitoring and Non-Destructive Evaluation, Department of Structural Engineering

Chair Roy invited Professor Richard Arneson, Chair of Graduate Council (GC), and Professor Benson Shing from the Department of Structural Engineering to present the proposal from the Department of Structural Engineering.

Professor Shing explained that the Department of Structural Engineering is proposing to change the name of the MS in Structural Engineering with Specialization in Health Monitoring, Prognosis, and Validated Simulations to MS in Structural Engineering with Specialization in Health Monitoring and Non-Destructive Evaluation to more accurately reflect the program. The department is also making minor adjustments to the program structure, including streamlining the coursework from 48 units to 36 units in alignment with similar programs at competitor universities. Professor Shing provided a brief overview of the program. At the close of the presentation Professor Arneson made a motion on behalf of GC to approve the proposed name change. Since the motion was made on behalf of a Senate committee no second was required. Chair Roy opened the floor to questions and comments.

An attendee asked whether this program is the first 36 unit Masters degree on campus. Professor Shing explained that the program would be the first 36 unit Masters program within the Department of

Structural Engineering, but it would not be the first 36 unit Masters program on campus. At the close of questions Chair Roy called for a voice vote. The motion to approve the name change of the MS in Structural Engineering with Specialization in Health Monitoring, Prognosis, and Validated Simulations to MS in Structural Engineering with Specialization in Health Monitoring and Non-Destructive Evaluation was passed unanimously.

[Note: The slides from this presentation are attached to these minutes as Enclosure E.]

REPORTS OF FACULTIES [*None*]

PETITIONS OF STUDENTS [*None*]

UNFINISHED BUSINESS [*None*]

NEW BUSINESS

Senate Council Resolution

Chair Roy introduced Professor Gedeon Deák, Chair of the Committee on Faculty Welfare and member of Senate Council, to present a resolution on behalf of Senate Council. Professor Deák shared that after the President of the United States issued an Executive Order barring immigrants from specific countries, the UC Office of the President and UC Chancellors issued a statement opposing the Executive Order and affirming their commitment to supporting all members of the UC community affected by the order. The proposed resolution endorses the statement made by UCOP and the Chancellors. A slide was projected with the text of the resolution.

Professor Deák made a motion to approve the resolution. Since the motion was made on behalf of a Senate committee no second was required. Chair Roy opened the floor to questions and comments.

An attendee asked whether this resolution was related to the petition presented at the last Representative Assembly (RA) meeting. Professor Deák clarified that this resolution is unrelated to the petition presented at the last RA meeting. It was noted that there are other ongoing efforts in response to the actions of the President and this resolution will not preclude other actions. Chair Roy affirmed that this resolution pertains specifically to the most recent Executive Order regarding immigration. An attendee asked if there are other mechanisms to address issues like this Executive Order or whether action is limited to motions through Senate Council. It was explained that the resolution was the most effective action right now but there are other mechanisms available. Additionally, there are other policy discussions occurring within the University. An attendee pointed out that the resolution does not address future students and suggested that future students be kept in mind going forward. Chair Roy agreed and noted that the resolution was drafted broadly in response to the immediate situation. Future students will be kept in mind going forward.

At the close of comments Chair Roy called for a voice vote. The resolution to endorse the statement from President Napolitano and the Chancellors was passed unanimously.

[Note: The text of the resolution is attached to these minutes as Enclosure F.]

Chair Roy asked for any additional new business. There being none, the meeting was adjourned at 5:15 p.m.

Tara A. Mallis, Senate Analyst

REPRESENTATIVE ASSEMBLY 2016-2017 MEMBERSHIP

10/11	11/29	1/31	4/4	6/6
-------	-------	------	-----	-----

Ex Officio Members:

Kaustuv Roy (Chair of Division)	+	+	+		
Pradeep Khosla (Chancellor)	+		+		
Farrell Ackerman (Vice Chair of Division)	+	+			
Robert Continetti (2015-16 Chair of Division)	+	+	+		
Ulrike Strasser (Chair, Committee on Academic Personnel)					
Gilberto Mosqueda (Chair, Committee on Admissions)	+	+			
David Stegman (Chair, Campus Community Environment)	+	+			
Kimberly Prather (Chair, Committee on Committees)	+	+	+		
Olivia Graeve (Chair, Committee on Diversity and Equity)					
Matthew Herbst (Chair, Educational Policy Committee)	+	+			
Gedeon Deak (Chair, Committee on Faculty Welfare)	+		+		
Richard Arneson (Chair, Graduate Council)			+		
Andrew Kahng (Chair, Committee on Planning and Budget)		+	+		
Katja Lindenberg (Chair, Committee on Privilege and Tenure)	+				
Emmanuel Theodorakis (Chair, Committee on Research)	+				
Geoffrey Cook (Chair, Undergraduate Council)	+	+	+		
Isaac Martin (Member, Academic Council)					
Kwai Ng (Member, Academic Council)					
Nadine George-Graves (Member, Academic Assembly)		+	+		
Gail Heyman (Member, Academic Assembly)	+				
Gentry Patrick (Member, Academic Assembly)					
Peter Cowhey (Interim Executive Vice Chancellor, Academic Affairs)	+	+	+		
David A. Brenner (Vice Chancellor, Health Sciences)					
Margaret Leinen (Vice Chancellor, Marine Sciences)		+	+		
Sandra Brown (Vice Chancellor, Research)	+				

Elected Members [Alternates in square brackets]

Lorraine Pillus / [] (Divisional Representative (at-large))	+				
Anna Joy Springer / [] (Divisional Representative (at-large))					
Sarah Gille / [] (Revelle College)	+	+	+		
Vlado Lubarda / [Charles Perrin] (Revelle College)		[+]	[+]		
Kim Albizati / [Eric Bakovic] (John Muir College)					
Adam Burgasser / [James Nieh] (John Muir College)	+	+	+		
Robert Cancel / [Sheng Xu] (Thurgood Marshall College - Wtr/Sp)	[+]				
Stanley Lo (Thurgood Marshall College - Fall)	+	+	-	-	-
Dan Hallin / [Christine Hunefeldt] (Thurgood Marshall College)	+, [+]	+, [+]	+, [+]		
Yuri Bazilevs / [Ella Tour] (Earl Warren College)					
John Hildebrand / [Doug Nitz] (Earl Warren College)	+		+		
Gershon Shafir / [Charles Tu] (Roosevelt College)		+	+		
Babak Rahimi / [] (Roosevelt College)					
Lei Ni / [Eduardo Macagno] (Sixth College)	+, [+]				
Robert Pomeroy / [Haim Weizman] (Sixth College)	[+]	+	+		
Henry Powell / [] (Emeritus Faculty)	+	+			
/ [] (Anesthesiology)	-	-			
/ [] (Anthropology)	-	-			
Peter Wang / [Gert Cauwenberghs] (Bioengineering)	[+]	+	[+]		
David Holway / [Jonathan Shurin] (Biological Sciences)	+	+	[+]		
Takaki Komiyama / [Dong-Er Zhang] (Biological Sciences)					
George Sen / [Gene Yeo] (Cellular & Molecular Med.)			+		
Jerry Yang / [Nathan Gianneschi] (Chemistry & Biochemistry)	+	+	+		

Key: + representative present; [+] alternate present; - not member or advisor at the time of meeting

REPRESENTATIVE ASSEMBLY 2016-2017 MEMBERSHIP

	10/11	11/29	1/31	4/4	6/6
Navtej Toor / [Mike Tauber] (Chemistry & Biochemistry)	[+]	[+]			
/ [Angela Yu] (Cognitive Science)					
Brian Goldfarb / [Robert Horwitz] (Communication)	+	+	[+]		
Leo Porter / [] (Computer Science & Engineering)	+	+	+		
Chung K Cheng / [] (Computer Science & Engineering)	+	+	+		
Bryan Sun / [Lawrence Eichenfield] (Dermatology)	-	+	+		
James Andreoni / [Karthik Muralidharan] (Economics)	+		+		
David Lagakos / [Prashant Bharadwaj] (Economics)	[+]	+	+		
Shana Cohen / [Carolyn Hofstetter] (Education Studies)		+	+		
David Sworder / [Zhaowei Liu] (Electrical & Computer Engineering)	+	+			
Yuan Taur / [Ken Kreutz-Delgado] (Electrical & Computer Engineering)		+			
Richard Clark / [Chris Kahn] (Emergency Medicine)	+	+	+		
Kalindi Vora / [Jillian Hernandez] (Ethnic Studies)	[+]	[+]	+		
Elena Martinez / [Cheryl Anderson] (Family Medicine and Public Health)	+	+, [+]	+		
Rebecca Plant / [Mark Hanna] (History)	+	+			
Robert Westman / [] (History)					
Roger Bohn / [] (Global Policy and Strategy)	+	+	+		
Grant Goodall / [Rachel Mayberry] (Linguistics)	+	+	[+]		
Seth Lerner / [Amelia Glaser] (Literature)					
Stephanie Jed / [Daniel Vitkus] (Literature)	[+]	[+]	+		
James McKernan / [David Meyer] (Mathematics)	+, [+]	[+]	+		
Jason Schweinsberg / [Dimitris Politis] (Mathematics)	+	+	+		
Xanthippi Markenscoff / [James Friend] (Mechanical & Aerospace Engineering)	[+]				
William McEneaney / [Kal Seshadri] (Mechanical & Aerospace Engineering)	+				
David Smith / [Doug Conrad] (Medicine)	[+]	+	+		
/ [] (Medicine)	-	-			
Stephanie Richards / [Sarah Hankins] (Music)	+	+	+		
Jian Luo / [Donald Sirbuly] (NanoEngineering)	+	+	+		
Richard Haas / [Ronald Ellis] (Neurosciences)					
/ [] (Neurosciences)	-	-			
Bobby Korn / [Linda Zangwill] (Ophthalmology)			[+]		
Simon Schenk / [Sameer Shah] (Orthopaedics)	[+]	+			
David Herold / [David Bailey] (Pathology)	[+]	[+]	+		
Jonathan Lin / [David Pride] (Pathology)	+	[+]	+		
/ [] (Pediatrics)	-	-			
/ [] (Pediatrics)	-	-			
Richard Daneman / [Hyam Leffert] (Pharmacology)	+	+	+		
Matthew Fulkerson / [Clinton Tolley] (Philosophy)	+	+	+		
Massimo Vergassola / [Oleg Shpyrko] (Physics)	[+]	+	[+]		
Massimo Di Ventra / [Richard Averitt] (Physics)	+		+		
David Mares / [] (Political Science)					
Simeon Nichter / [] (Political Science)	+	+			
Niloo Afari / [Gregory Aarons] (Psychiatry)	+	+	+		
Jared Young / [Barton Palmer] (Psychiatry)	+	+	[+]		
Adam Aron / [Stephan Anagnostaras] (Psychology)	+	+	+		
/ [] (Radiation Medicine & Applied Sciences)	-	-			
Amilcare Gentili / [Roland Lee] (Radiology)	-		+		
David Dubowitz / [Jiang Du] (Radiology)	-	+			
David Schkade / [Yuval Rottenstreich] (Rady School of Management)		+	+		
David Natale / [Dwayne Stupack] (Reproductive Medicine)	[+]	[+]	+		
Sarah Giddings / [Paola Cessi] (SIO)					

Key: + representative present; [+] alternate present; - not member or advisor at the time of meeting

REPRESENTATIVE ASSEMBLY 2016-2017 MEMBERSHIP

10/11	11/29	1/31	4/4	6/6
-------	-------	------	-----	-----

Guy Masters / [Anne Pommier] (SIO)	[+]	[+]	[+]		
George Sugihara / [Laurence Armi] (SIO)		+			
Andrew Allen / [Amato Evan] (SIO)			+		
Andreas Andersson / [Stuart Sandin] (SIO)	+	+	+		
Jennifer Taylor / [] (SIO)	+		+		
/ [] (Sociology)	-	-			
Bradley Moore / [Dionicio Siegel] (SSPPS)					
John McCartney / [Chia-Ming Uang] (Structural Engineering)	+	+	[+]		
Justin Brown / [] (Surgery)					
Christina Jamieson / [] (Surgery)	+	+	+		
Robert Castro / [Victoria Petrovich] (Theatre and Dance)	+	+	+		
Charles Means / [Kim Rubinstein] (Theatre and Dance)	+	[+]	+		
John Welchman / [Grant Kester] (Visual Arts)			+		
Ruben Ortiz / [Kuiyi Shen] (Visual Arts)					

Advisors:

Amarnath Gupta / [Harinath Garudadri] (Research - General Campus)	+, [+]		+, [+]		
Ellen Breen / [Charles King] (Research - Health Sciences)	+, [+]	+	+, [+]		
/ [] (Research - Marine Sciences)	-	-			
Rushil Patel (Undergraduate Student)	+	+	+		
Dylan Trinh (Undergraduate Student)	+		+		
Tatiana Zavodny (Graduate Student)	+	+	+		
Nathaniel Wood-Cohen (Graduate Student)	-	+	+		

Gerry Mackie	+	+			
---------------------	---	---	--	--	--

ACADEMIC SENATE OVERVIEW

January 31, 2017

What is the Academic Senate?

The Academic Senate is the primary vehicle through which faculty participate in shared governance.

Regents Standing Order 105 (Regents Bylaw 40.2)

Defines the duties and authority of the Academic Senate:

- Sets admissions requirements
 - Sets graduation requirements.
 - Approves courses and curriculum.
 - Approves publication of manuscripts by UC Press.
-

- Advises on budget.
- Advises on other matters pertaining to the conduct and welfare of the University.

How is the Senate Organized?

Academic Senate = UC (Systemwide) Academic Senate

Each UC campus has a Senate that is a Division of the UC Academic Senate.

UCSD = San Diego Divisional Academic Senate

UC versus SD Divisional Senate

UC Academic Senate
Leadership

- Chair: Jim Chalfant, UCD
- Vice Chair: Shane White, UCLA

San Diego Divisional
Leadership

- Chair: Kaustuv Roy, Biology
- Vice Chair: Farrell Ackerman, Linguistics

UC versus SD Divisional Senate

UC

- Academic Council
- Assembly
- 22 Standing UC Committees

San Diego

- Senate Council
- Representative Assembly
- 30 Standing SD Committees
- Senate Administration Council

The Workflow

- The Senate is a deliberative body that functions through committees, much like other senates.
- Standing committees do the transactional work under the purview of the committee (e.g. CAP & academic file reviews, UGC & course approvals, CPT & grievances).
- Requests for Senate consultation on matters pertaining to the faculty as a whole are sent by the Senate Chair to Senate standing committees for review and discussed at Senate Council, before a response is issued by the Senate Chair.
- Legislative matters (which require bylaw or regulation changes) are voted on at Representative Assembly.
- The Senate follows the academic calendar (most committees do not meet during the summer).

Representative Assembly

- Legislative body.
- Composed of representatives from all academic departments, schools and colleges.
- Governed by parliamentary procedure.
- Issues are vetted by standing Senate committees, whose reports are intended as briefing documents to inform the voting members of the Assembly.

Who are Senate members?

- Defined in Regent's Order 105
- San Diego Divisional Senate Members ~2,000
(including ~500 emeriti faculty)
- Most Professorial Positions, Full-Time LSOEs & LPSOEs,
and Select Administrators

Who are Senate members?

Professors

- Professor (Asst/Assoc/Full)
- Professor in Residence (Asst/Assoc/Full)
- Professor of Clinical (Asst/Assoc/Full)
- Acting Professor (Assoc/Full)

Full-Time LSOEs & LPSOEs/Teaching Professors

- Lecturer with Security of Employment (Lecturer & Senior)
- Lecturer with Potential for Security of Employment
(Lecturer & Senior)

Senate Leadership

Senate Chair

- A San Diego Divisional Senate Vice Chair is elected each spring, and serves one year as Vice Chair before serving as Chair for one year, the following year.

Other Elected Positions

- Divisional Representatives to the UC (Systemwide) Assembly of the Academic Senate
- Members of the Committee on Committees (ConC)

ConC

- Appoints all other standing Senate committee members and chairs (~250/year)
- Recommends Senate members for service administrative committees (200-300/year)

Senate Staff

Provide administrative support to the Divisional Senate Chair and Divisional Senate committee chairs; help orient new committee chairs, provide guidance on Senate bylaws, regulations and operating protocols; and provide institutional memory to incoming Senate leadership. (Senate leadership changes each year.)

Value to Faculty of Senate Service

- Provides faculty an opportunity to participate in shared governance (new courses, curriculum changes, admissions criteria, graduation requirements, academic advancement, campus budget discussions, facilities planning, diversity and equity, information technology).
- Fulfills academic review service obligation.
- Provides an opportunity for faculty to network with other faculty from all areas campus.

Senate Committee Appointments

- A call goes out in January for Senate Members to go to the Senate's website to update their committee service preferences.
- ConC begins appointing to Senate committees in winter quarter for service the following academic year.

Senate Service Preferences

<http://senate.ucsd.edu/online-tools/>

[Service Preference Profile](#)

Manage your committee preferences and service availability. This service is accessible to all regular and emeritus Senate members.



Campus Safety



GARRY MAC PHERSON
AVC, Environmental & Building Services

DAVID ROSE
Chief of Police

DR. MONIQUE CRANDAL
Director, Student Affairs Case Management Services

DAN GOUGH
Director, Environment, Health & Safety

DISMAS ABELMAN
Manager, Emergency Management

ROBERTO MEZA
Campus Physical Security Program Manager

January 31, 2017



DISMAS ABELMAN

Manager, Emergency Management



Emergency Management Division

- Overarching goal is to provide the Students, Faculty and Staff with a safe environment.
- Coordinates with other departments to quickly inform Students, Faculty, and Staff of an incident(s) that could affect campus or our community members.
- Responsible for assisting the coordination of our Executive Policy Group (EPG) in the event of a large scale incident.
- Co-Chair of the Behavioral Threat Assessment Management Team.

3



Recent Incidents

- ISLA VISTA - 2014
- UC MERCED - 2015
- ORLANDO NIGHTCLUB - 2016
- UCLA - 2016
- FORT LAUDERDALE AIRPORT – 2017

4



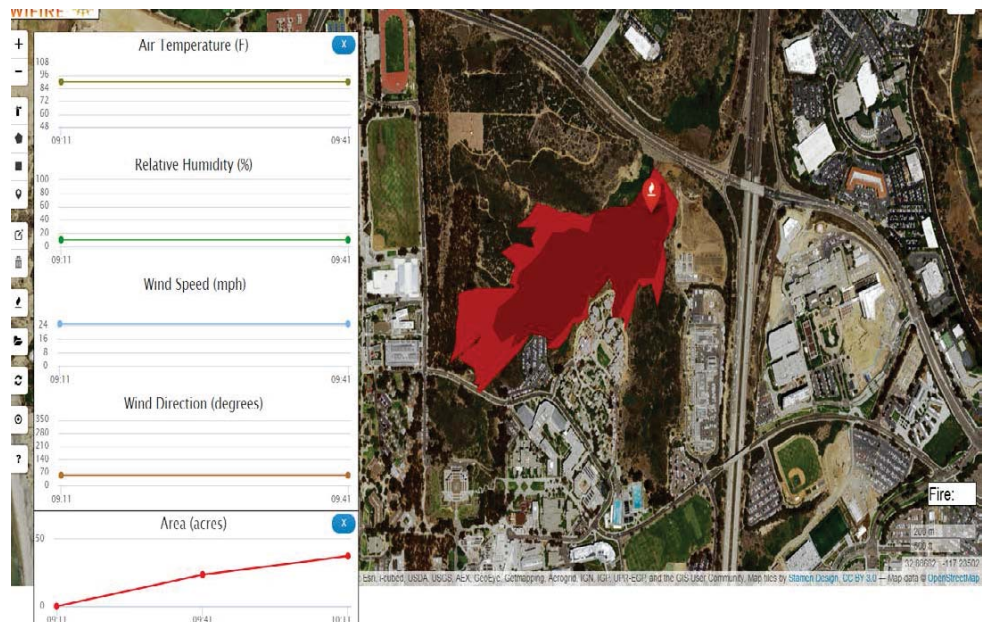
Preparedness & Activation

- CAMPUS EMERGENCY RESPONSE TEAM (CERT)
 - 365 Currently Trained
- RECENT EMERGENCY EXERCISES
 - Active Shooter Tabletop Exercise
 - Coastal Guardian – Regional Exercise
 - Wildfire Tabletop Exercise
 - Great Shakeout



Preparedness & Activation

- **EMERGENCY OPERATIONS CENTER (EOC)**
- **EMERGENCY OPERATIONS PLAN (EOP)**





Programs In Place

- Emergency Management
- Behavioral Threat Assessment & Management Team
- Active Shooter Training – UC Police Department
- Mass Notification System – Triton Alert (MIR3)
- Regional Partnerships:
 - *Office of Emergency Services*
 - *San Diego Police Department*
 - *San Diego Fire Department*
 - *San Diego Sheriff's Department*
 - *Law Enforcement Coordination Center*
 - *San Diego Lifeguard*
 - *Local Universities*
 - *UC campuses*
 - *UC San Diego Health System*
 - *Hazardous Incident Response Team*



Safety is everyone's responsibility

“See something, Say Something”

DR. MONIQUE CRANDAL

Director, Student Affairs
Case Management Services

- Fall 2016 Trends -

SUPPORTING STUDENTS OF CONCERN: OUTREACH AND TRAINING

- In October 2016, over **450** Faculty Mental Health Guides and over **5600** “How to Support Students of Concern” folders were sent to staff and faculty across the campus.



Chancellor's Cabinet	Divisional Deans	Undergraduate Colleges	Graduate Division	Academic Senate
School of Medicine	School of Pharmacy	Scripps Institute of Oceanography	Undergraduate Academic Chairs	All Student Affairs Departments
Career Services Center	All Athletics Coaches and Facilities Staff	Behavioral Threat Assessment and Management Team Members	Campus Community Centers	Teaching and Learning Commons
All Graduate Coordinators	Housing, Dining and Hospitality Supervisors	Counseling and Psychological Services	Student Health Services	Labor Relations
Graduate Department Chairs	Student Life	Campus Counsel	University Communications	Mail Services

How to Support Students of Concern

This informational guide is designed to assist faculty and staff in recognizing and supporting students of concern.

What is a Student of Concern?
A student whose academic progress or functioning in the university environment is adversely affected due to a number of indicators outlined below that are impacting their well-being and/or the well-being of others.

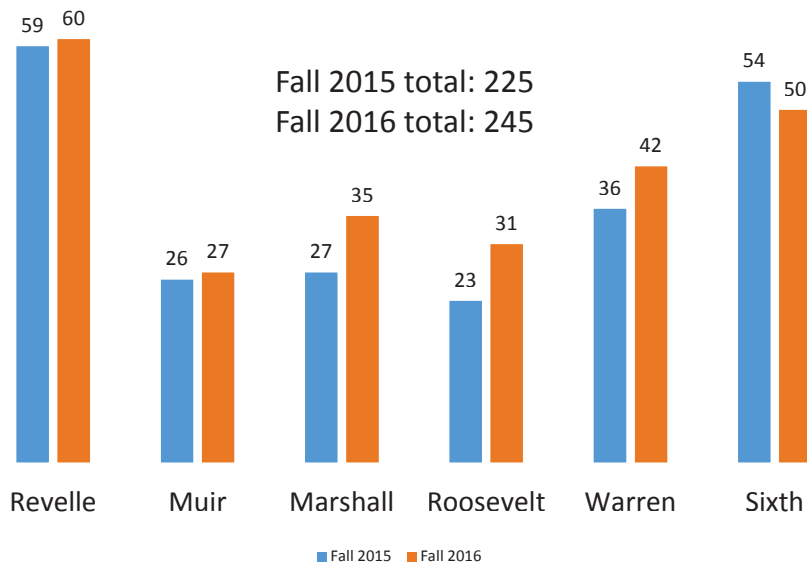
Physical Signs	Change in Behavior	Psychological Signs	Unmet Basic Needs
Poor personal hygiene Change in appetite; weight loss or gain Agitation or restlessness Change in sleep Recurring physical complaints	Withdrawal or isolation Loss of interest or pleasure in activities Increased alcohol or substance use Irritability or anger Missed or late arrival to class/work	Delusions or paranoia Guilt or worthlessness Sad, anxious, angry mood or mood swings	Lack of housing Food insecurity Financial struggles

**Report your concerns 24/7 to the Triton Concern Line:
(858) 246-1111**

Safety Risk	Imminent Risk to Health and Safety
Physical violence High risk/dangerous behavior Suicidal behavior Threats of violence to others	Call Campus Police at (858) 534-HELP or 911 from any campus phone

UCSanDiego

UNDERGRADUATE STUDENTS OF CONCERN FALL 2015 AND 2016 COMPARISON



- Fall 2016: 46% of SOCs were referred to a Student Affairs Case Manager
- Fall 2015: 35% of SOCs were referred to a Student Affairs Case Manager

STUDENT PSYCHIATRIC HOSPITALIZATIONS

	Fall	Reside Off Campus	Required Academic Adjustment
Total	28 Hospitalizations (22 students)	8	17

- 87% of the students hospitalized needed some type of academic adjustment immediately following their hospitalization
- 14 of the students hospitalized have been enrolled for 6 or less quarters
- 2015-16: Instituted a Student Post-hospitalization protocol
- 2016-17: Creating a student mental health hospitalization brochure



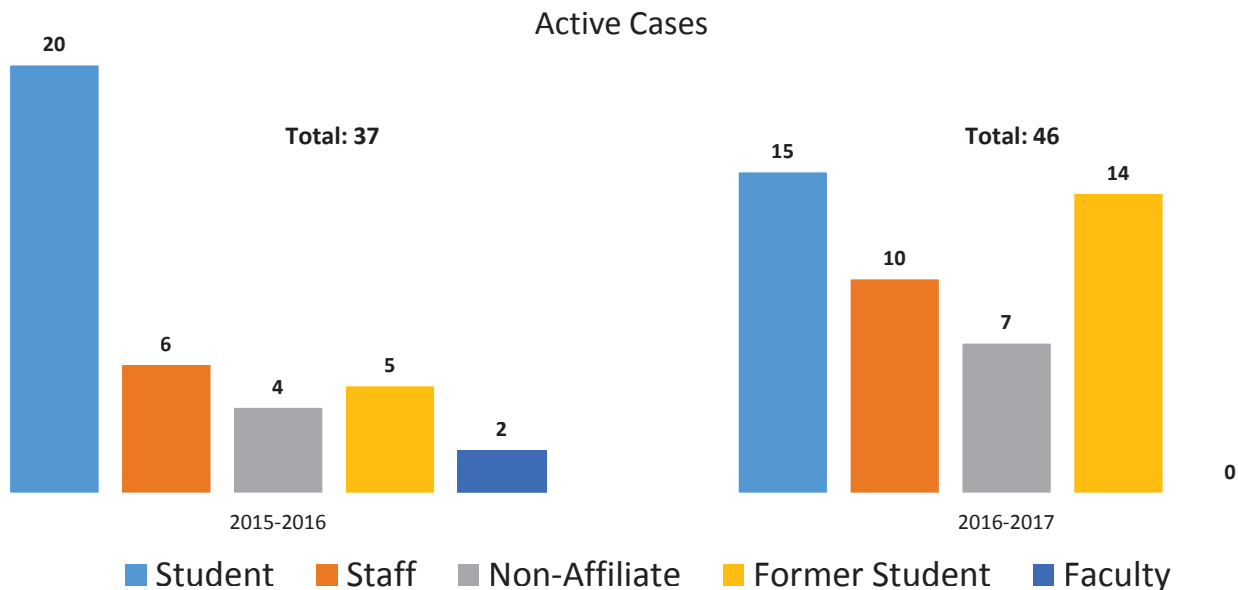
TRITON CONCERN LINE: 858-246-1111

125	Total Number of Calls to date (Fall quarter: average 1 call per day)
80%	Calls regarding an undergraduate SOC
45%	Reports made outside of business hours
20%	Calls from Faculty
15	Calls included the on-call Dean/Case Manager

13



BEHAVIORAL THREAT ASSESSMENT AND MANAGEMENT TEAM



14

BEHAVIORAL THREAT ASSESSMENT AND MANAGEMENT TEAM MEMBERSHIP

Ex Officio	Departments
Abelman, Dismas	Manager, Emergency Services
Crandal, Monique (Mendoza)	Director, Student Affairs Case Management Services
Lea'e, Patricia	Detective, Police Department
Appointed	Departments
Allina, Rosalyn	Social Worker, Student Health Service
Billberry, Elizabeth	Director, Security Services/ Parking/ Transportation, UCSD Hillcrest Hospital
Darling, Denise	Manager, Scripps Institute of Oceanography
DeSaulniers, Christopher	Employee Relations Specialist, Human Resources
Donoghue, Daniel	Provost, Sixth College/ Professor Chemistry & Biochemistry
Farace, Jennifer	Director, Curricular and Student Affairs, School of Medicine
Gattas, Jeffrey	Executive Director, MMRPA
Jackson, Steven	Director, Facilities Management
Juarez, Reina	Director, Counseling and Psychological Services
Kelly, Carolyn J.	Assoc. Dean for Admissions & Student Affairs, SOM
Luth, Melissa	Sergeant, Police Department
Mallory, Sherry	Dean of Student Affairs, Revelle College
Mashman, Robert	Clinical Director, Counseling and Psychological Services
Nelson, Laurel	Assistant Director, Teaching/ Learning Commons
O'Dell, Douglas	Lieutenant, Police Department
Oh, Jennifer	Director, Postdoctoral & Visiting Scholar Affairs
Otten, Rebecca	Director, Strategic Partnerships/ Housing Allocations, Housing, Dining and Hospitality
Reznik, Vivian	Assistant Vice Chancellor, Faculty Affairs, Health Systems
Rosen, Amy	Director, Academic Employee Relations
Smith, John	Counselor, Faculty and Staff Assistance Program
White, Benjamin	Director, Student Conduct

ROBERTO MEZA

Manager, Campus Physical
Security Program

UCPD COMMUNITY PROGRAMS 2016

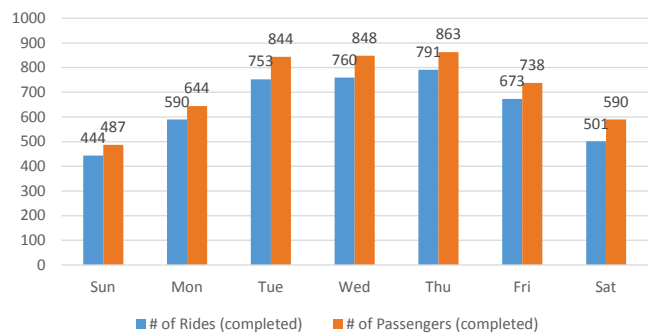
- Rape Aggression Defense (R.A.D.) Training
 - 7 Classes
 - 49 Trainees
- Self-Defense Training
 - 23 Classes
 - 662 Trainees
- Active Shooter Preparedness Training (ALICE)
 - 104 Classes
 - ~2,750 Trainees
- Parent Orientation/Crime Prevention Training
 - 9 Classes
 - 360 Trainees

Updated 1/24/17

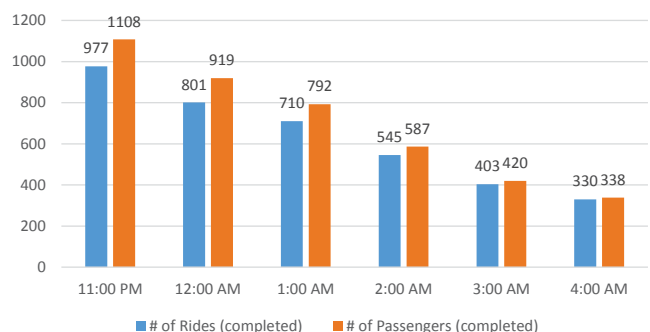
TritonRides

- 5,544 Completed Rides
- 6,247 Total Riders
- 1,796 Unique Riders
- 4 Vehicles (varies on requests)
- Avg. response time: 13min, 39sec
- Avg. ride time: 11min, 2sec
- Operating hours
11:00PM – 6:30AM

TritonRides By Day of Week



TritonRides By Hour of Day



ShotSpotter – Gunshot Detection System Outdoor Detection & Response



A Gun is Fired:
The sound of an explosion radiates



Sensors Triggered:
Coverage area includes campus buildings & outdoor spaces



Location Pinpointed:
Data analyzed by ShotSpotter Algorithm to deliver precise location



Verification
All gunfire alerts are verified by acoustic experts and communicated



Police Alerted:
Within seconds, ShotSpotter Software alerts security and police



SPEED OF RESPONSE

Approximately 47 Locations on East and West Campus

EMERGENCY CALL BOXES



- A solution was reviewed and chosen which reflects the existing Emergency Towers so that the general public could associate these new callboxes with Emergency and Non-Emergency use.
- The new towers have the following features:
 - Dual-Button configuration for 911 and Non-Emergency
 - Broadcast capable (when tied into Emergency Notification)
 - Cellular and Solar standalone units
 - Real-time image broadcast (BETA testing)
- New aluminum TalkAPhone towers were installed December 2016:
 - Currently being configured/programmed to integrate with Emergency Broadcast
 - Dual Button configuration
 - LED Strobe and Area Light (when in use)
 - Integration with video cameras for automated monitoring





LOCKDOWN HARDWARE

- A Review and test of door hardware for alternatives to existing door locking hardware in classrooms, offices, etc. in response to Lock Down and Shelter in Place events
- Hardware must provide following:
 - Interior indicator providing status whether the door is locked or unlocked from across the room;
 - Allow interior occupants to lock or secure the exterior handle to space.
- Solution: A Classroom Security Function lock which secures exterior knob/lever from inside the secured space but allows for free and immediate egress.




21



Questions

22



Degree Proposal: Master of Professional Accountancy (MPAc)

Presented by Ross Valkanov
Jan 31, 2017

Meeting Material, page 47

Rady | UC San Diego
School of Management



Key Points

- Self supporting program similar to other Rady Master programs (non-state-supported)
 - Master of Finance, Master of Business Analytics
- Strong demand for CPAs
 - Meets new educational requirements for CPA licensing
- Duration: 9 month program (September- June)
- Size: Approximately 75 MPAc students per year
- 50 quarter units (12 courses plus two 1 unit professional seminars)
- Targets UCSD undergraduates
 - Undergraduates interested in accounting

- Effective Fall 2018

Rady | UC San Diego
School of Management



Demand and Target Audience

- Rady Accounting Minor-- 500 declared
- Approximately 200 students graduate with an accounting minor each year
- We expect our MPAc would be made up of approximately 67% domestic and 33% international students.
 - Similar to our MBA (67% domestic/ 33% international)



Resources

- 4 full time ladder track accounting faculty
 - Program Director: William Lanen, Professor Emeritus, University of Michigan's Ross School of Business
- Will utilize existing Rady resources for IT support, career placement, and admissions
- No new campus resources will be required for this self-supporting program



Financials and Student Support

- A class size of 72 will generate annual revenue of approximately \$3,870,000 (before financial aid).
 - 14% of the fees generated from the MPA program will be reserved for merit and need-based financial aid in year one. 8% will be allocated in steady state.
 - Revenues support core academic programs: state-supported MBA, Ph.D. and undergraduate minor.
 - Support for research and ladder track accounting faculty

Rady | UC San Diego
School of Management



- Thank you!

Rady | UC San Diego
School of Management



Accounting Enrollment by Program 1993- 2014

	BACHELOR'S	MASTER'S IN ACCOUNTING	MBA ACCOUNTING	MASTER'S IN TAXATION	Ph.D.	TOTAL
1993-94	189,863	10,114	3,398	5,942	1,002	210,319
1994-95	192,870	10,010	3,510	6,510	870	213,770
1995-96	174,010	9,430	3,360	4,760	770	192,330
1998-99	134,050	8,620	3,770	2,600	770	149,810
1999-00	127,960	9,455	2,445	3,130	680	143,670
2000-01	134,775	10,375	4,000	2,395	800	152,345
2001-02	133,435	12,565	4,065	3,555	890	154,510
2002-03	141,175	17,540	5,270	3,550	1,085	168,620
2003-04	142,735	18,795	4,030	3,595	955	170,110
2006-07	173,299	21,253	4,482	3,239	1,095	203,368
2007-08	181,075	22,291	3,664	4,580	1,224	212,834
2009-10	187,534	29,464	5,100	2,822	1,188	226,108
2011-12	201,570	29,648	5,132	2,840	1,189	240,379
2013-14	207,071	39,641	3,107	2,068	1,195	253,082



Other MPA Programs- UC Schools

- **UC Davis Graduate School of Management**
 - Began in Fall 2012
 - 9 month Program
 - 56 students enrolled in 2016-17
 - charges \$44,850 (\$934/unit)
- **UC Irvine Paul Merage School of Business**
 - Began in Fall 2013
 - 9 month Program
 - 109 students enrolled in 2016-17
 - charges \$44,100 (\$918/unit)
- **UC Riverside A. Gary Anderson Graduate School of Management**
 - Began in Fall 2012
 - 9 month Program
 - 50 students enrolled in 2015-16
 - charges \$52,944(\$1103/unit)



Core Curriculum

- MGTP 414 Business Law or MGT 417* Current Business Law Issues - 4 Units
- MGTP 416 Ethics in Accounting and Business - 4 Units
- MGTP 421 Internal Control over Financial Reporting - 4 units
- MGTP 424 Professional Research and Communication for Accountants- 4 Units
- MGTP 432 Advanced Auditing and Forensic Accounting - 4 Units
- MGTP 434 Financial Statement Analysis or MGT 469* Financial Statement Analysis - 4 Units
- MGTP 444 Issues in Financial Reporting for Global Business: Mergers, Acquisitions and Complex Financial Structures - 4 Units
- MGTP 401 Professional Seminar – 1 Unit (will be taken two times for credit)



Electives

List A - Students must take at least one of the following courses as an elective:

- MGT 421 CEO, the Board of Directors, and Corporate Governance
- MGTP 433 Current Issues in the Practice and Regulation of Auditing
- MGT 439* Topics in Organizational Behavior
- MGT 429* Topics in Corporate Governance

List B - Students may select from the following courses for their remaining electives:

- MGTP 422 Systems, Processes and Technology for Accounting
- MGTP 429 Advanced Topics in Accounting and Auditing
- MGTP 431 Not-for-profit and Government Accounting
- MGTP 441 Corporate Valuation and Forecasting
- MGTP 443 Global Taxation and Business Strategy
- MGT 419 Global Business Intensive
- MGT 420 Negotiation
- MGT 422 Creativity and Innovation
- MGT 426 Creating a High-Performing Workplace
- MGT 427 Decision Analysis
- MGT 430 Biotechnology Industry, Structure, and Strategy
- MGT 442* Topics in Decision Sciences
- MGT 443* Topics in International Business
- MGT 450 Project Management
- MGT 451 Technology and Innovation Strategy
- MGT 454 Disruptive Technologies for Health Care
- MGT 459* Topics in Innovation
- MGT 492 Financial Risk Management
- MGT 495* Topics in Finance





Request to Change Degree Requirements: Master of Finance

Presented by Ross Valkanov
Jan 31, 2017

Meeting Material, page 49



Key Point

- Academic Senate regulation 703, section B, bullet 2:

“Only courses in which the candidate is assigned grades A, B, or C may be counted in satisfaction of the requirements for the Master’s degree.”

- Change to :

“Only courses in which the candidate is assigned grades of A, B, C, or S may be counted in satisfaction of the requirements for the Master’s degree. No more than 12 units of S grades may be counted in satisfaction of the requirements for the Master’s degree.”





Reason

- Majority of MFin students take
 - MGT 416: Professional Seminars in Finance (1 unit)
 - MGT 417: Professional Communication in Finance (1 unit)
 - Grading: S/U (due to nature of course)
- Many MFin students take the following two MBA courses
 - MGT 496A: Venture Capital Management I (2 units)
 - MGT 496B: Venture Capital Management II (2 units)
 - » Grading: S/U (due to nature of course)



Restrictions on S/U grades

- No more than 12 units of S may be used to satisfy degree requirements
 - 4 units of MGT (Master of Finance courses) with S/U
 - 8 units of MGT (MBA courses) with S/U
- All Master of Finance courses with the exceptions of MGT 416 and MGT 417 require letter grades.
- If possible: effective immediately (winter, 2017)



- Thank you!

Proposed Changes for MS Degree Specialization in Structural Health Monitoring and Nondestructive Evaluation

Michael Todd

University of California, San Diego
Department of Structural Engineering

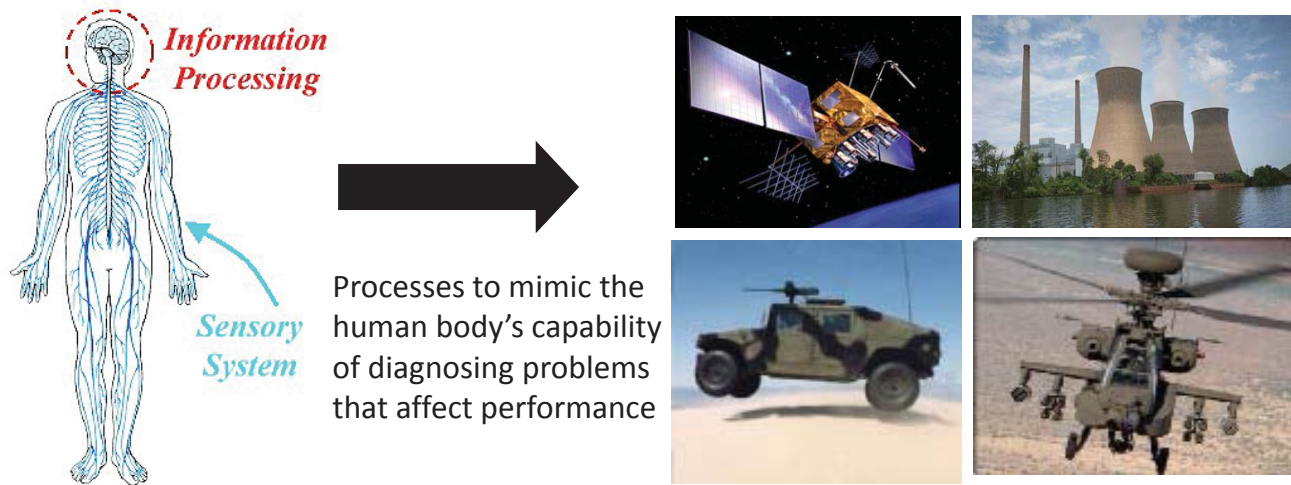
January 31, 2017

History

- MS in Structural Engineering with Specialization in Structural Health Monitoring, Validated Simulation, and Damage Prognosis
 - Established in 2003 with Senate/CCGA approval
 - Had a synchronous distance learning component (first one at UC San Diego)
 - Taught by Structural, Mechanical & Aerospace, Electrical & Computer, and Computer Science & Engineering faculty and Adjunct Faculty at Los Alamos National Laboratory
 - Established as an educational component of the Engineering Institute, a research-driven educational program launched by a strategic partnership with Los Alamos National Laboratory
 - Have graduated more than 60 people since 2005
 - The only structural health monitoring-related MS in the USA
-
-

What is Structural Health Monitoring?

Structural Health Monitoring (SHM) is the process of developing an in-situ damage assessment capability for aerospace, civil, and mechanical systems. Damage is defined as changes to the material and/or geometric properties of a system that adversely affect its performance. Nondestructive Evaluation (NDE) is the same process as SHM, but the process usually requires the system or component to be taken out of service during the monitoring.



Three Main Changes to Existing Program

- Change the Specialization to “Structural Health Monitoring and Nondestructive Evaluation”
 - Old title too long/bulky and non-representative of actual program content
 - Ignores the more mature field of NDE, which is in common practice
- Change the structure of the program (more on next slide)
 - More emphasis on focus areas than core classes; capstone experience
- Changed the total MS units to 36
 - Competitors (Stanford, Univ. Michigan, Georgia Tech, UCLA, Berkeley) have 36 hour MS programs
- Maintain the synchronous distance learning modality
 - Allows remote instruction to reach a broader audience with UC San Diego’s unique program

Updated MS Program Structure

Requirement	Thesis option (units)	Comprehensive option (units)
Core course	SE 263 “Nondestructive Evaluation (4) [1] SE 265 “Structural Health Monitoring Principles” (4)	SE 263 “Nondestructive Evaluation (4) [1] SE 265 “Structural Health Monitoring Principles” (4)
Capstone experience	No requirement	SE 296 “Independent Study” or approved equivalent (4)
Thesis research	SE 299 “Graduate Research” (8)	No requirement
Focus sequence 1	One from Focus Area 1 (4)	One from Focus Area 1 (4)
Focus sequence 2	Two from Focus Area 2 (8)	Two from Focus Area 2 (8)
Focus sequence 3	Two from Focus Area 3 (8)	Two from Focus Area 3 (8)
Technical elective	No requirement	One from Technical Elective (4)
Total units	36	36

Focus Area 1: “Sensing” (6 possible courses from SE, ECE, CSE)

Focus Area 2: “Data Interrogation” (14 possible courses from SE, ECE, MAE, CSE)

Focus Area 3: “Modeling and Analysis” (14 possible courses from SE, ECE, MAE, CSE)

Focus Sequence and Technical Elective Courses

Focus Area 1 “Sensing”	Focus Area 2 “Data Interrogation”	Focus Area 3 “Modeling and Analysis”
SE 252 “Experimental Mechanics and NDE” SE 264 “Sensors and Data Acquisition for Structural Engineering” [1] SE 266 “Smart and Multifunctional Materials” SE 268 “Structural System Testing and Model Correlation” CSE 237A “Introduction to Embedded Computing” ECE 257B “Principles of Wireless Networks”	SE 207 “Diagnostic Imaging” [2] ECE 251A “Digital Signal Processing I” ECE 251B “Digital Signal Processing II” ECE 251C “Filter Banks and Wavelets” ECE 253 “Fundamentals of Digital Image Processing” ECE 254 “Detection Theory” SE 268 “Structural System Testing and Model Correlation” MAE 283A “Parametric Identification: Theory and Methods” CSE 254 “Statistical Learning” CSE 255 “Data Mining and Predictive Analytics” CSE 250A “Principles of Artificial Intelligence: Probabilistic Reasoning and Learning” CSE 250B “Principles of Artificial Intelligence: Learning Algorithms” ECE 271A Statistical Learning I ECE 271B Statistical Learning II	SE 207 “Fracture Mechanics and Failure Mechanisms” [1,2] SE 207 “Validation and Verification of Computational Models” [2] SE 202 “Structural Stability” SE 203 “Structural Dynamics” SE 205 “Nonlinear Mechanical Vibrations” SE 206 “Random Vibrations” SE 224 “Structural Reliability and Risk Analysis” SE 233 “Computational Techniques in Finite Elements” or SE 276A “Finite Elements in Solid Mechanics I” SE 235 “Wave Propagation in Elastic Media” or MAE 238 “Stress Waves in Solids” SE 236 “Wave Propagation in Continuous Structural Elements” SE 253A “Mechanics of Laminated Composite Structures I” SE 262 “Aerospace Structures Repair” SE 254 “FRPs in Civil Structures” SE 268 “Structural System Testing and Model Correlation”

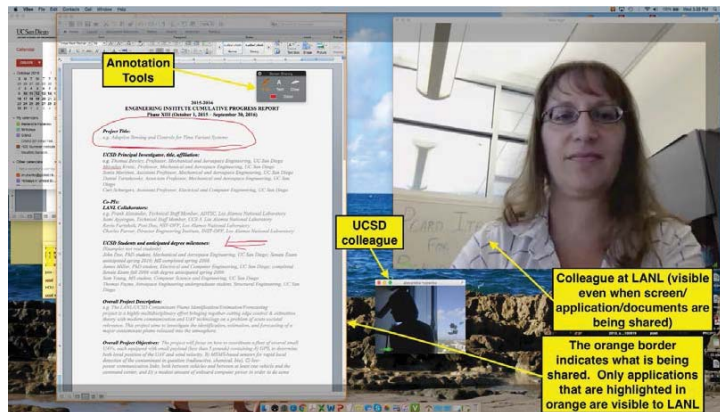
Focus Sequence Approved List

Technical Elective Approved List

SE 200 “Applied Mathematics in Structural Engineering” SE 253B “Mechanics of Laminated Composite Structures II” MAE 273A “Dynamic Behavior of Materials” SE 201A “Advanced Structural Analysis” SE 260 “Aerospace Structural Mechanics I” ECE 250 “Random Processes” SE 204 “Advanced Structural Dynamics” SE 276B “Finite Elements in Solid Mechanics II” ECE 241D “Array Processing” SE 234 “Plates and Shells” MAE 208 “Mathematics for Engineers” ECE 255AN “Information Theory” MAE 272 “Imperfections in Solids” ECE 272A “Stochastic Processes in Dynamic Systems” ECE 275A “Parameter Estimation I” CSE 250C “Machine Learning Theory”

Synchronous Learning Mode

- Obtaining WASC approval now
- Using VSee (originally used for telemedicine/telehealth)
 - High-definition video (256 bit FIPS 140-2 AES encryption)
 - Free to use!
 - Any window on instructor's screen may be annotated



Statement from UC President and Chancellors

We are deeply concerned by the recent executive order that restricts the ability of our students, faculty, staff, and other members of the UC community from certain countries from being able to enter or return to the United States.

While maintaining the security of the nation's visa system is critical, this executive order is contrary to the values we hold dear as leaders of the University of California. The UC community, like universities across the country, has long been deeply enriched by students, faculty, and scholars from around the world, including the affected countries, coming to study, teach, and research. It is critical that the United States continues to welcome the best students, scholars, scientists, and engineers of all backgrounds and nationalities.

We are committed to supporting all members of the UC community who are impacted by this executive action.

Proposed Resolution

The Representative Assembly of the University of California San Diego endorses the statement from President Napolitano and all ten UC Chancellors opposing President Trump's recent Executive Order barring citizens of seven Muslim-majority countries from entry into the United States.

The Assembly is committed to supporting members of the UCSD community who are affected by this Executive Order.